



Mobiscope

Video from webcams on mobile – for home surveillance or just for fun!

For Java-powered phones and Symbian OS devices

Getting Started Guide

You can start viewing your network (IP) cameras right after Mobiscope Client installation on your mobile device. If you install Mobiscope Desktop on your computer you will also get additional functionality.

Learn how to view your network cameras in the "Camera list" section.

The following Mobiscope features will become available after Mobiscope Desktop installation:

1. Viewing up to 4 network and USB-cameras connected to the computer;
2. Motion detection and e-mail alerts;
3. Recording triggered by motion and a schedule.

1. Installing Mobiscope Client on a phone

You can download the client directly to your mobile device. The WAP download location is: **wap.mobiscope.com**

If for some reason you can't download the client module directly, or error occurs at download, you can download files from our site. Open the page 'Download' in your computer browser:

www.mobiscope.com/download

2. Starting the client

If the client is completely installed on your mobile phone and works properly, you will see the title screen at startup.



Before you can connect to your cameras through the mobile phone, you should configure access to the Internet for third-party applications. As a rule, you should make right settings for access point name (APN) in data service settings on the mobile phone.

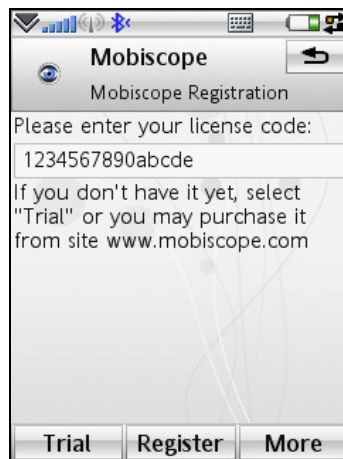
Most mobile networks offer two different APNs: one for full Internet connection and another that is a more limited set, is often used for WAP only. You should configure APN for full Internet access. Internet APN is used by third-party applications which needs direct Internet access (such as various messengers, web browsers, email clients, etc.) or when you use mobile phone as a modem to access the Internet from your computer.

You can get to know specific Internet APN settings for your mobile phone from support service of your mobile network operator. We recommend you precise the following: which tariff plan is optimal for using third-party applications, and which settings are proper for working with full Internet access through TCP/IP connection. If it is problematic to connect via TCP/IP connection type, please select HTTP connection type in Setup section.

3. Registration and trial

After the first launch of Mobiscope you will be asked to insert the license code, which you have received with the purchase of the program. Please, insert the license code into corresponding field and select **Register** from menu.

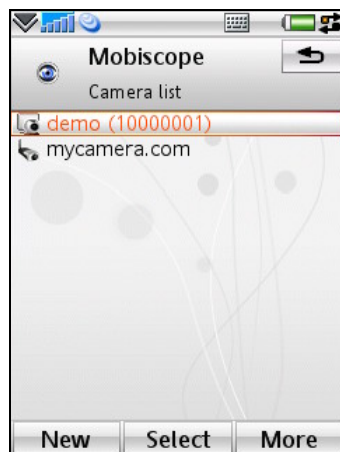
If you want to use Mobiscope in trial mode, choose **Trial** from the menu.



4. Camera list

You can add the number (Mobiscope computer number) of your computer with cameras connected to it to a camera list. USB cameras and network cameras can be managed by Mobiscope Desktop. The demo computer is added to your camera list by default.

You can also add network cameras (public or your own) and view them directly without connecting to Mobiscope Desktop. In this case motion detection and recording features are not available.

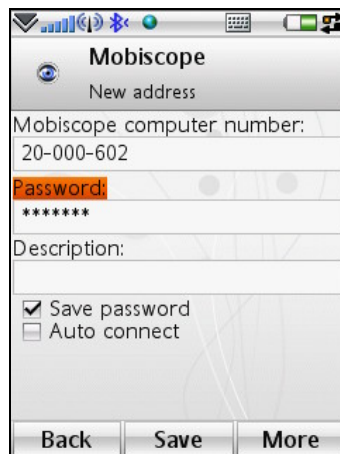


To add a new camera to the camera list you should select the menu item **New camera**.

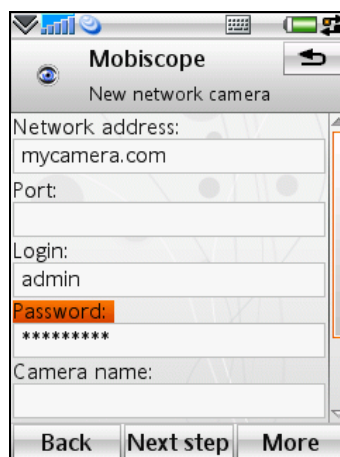
At the first step of the New camera wizard you should select what you want to add – a computer number or a network camera.


If you add a computer number you should enter the number of the computer which you received at registration of Mobiscope service while installing the desktop part. Then you need to enter your password which you specified in the Mobiscope Desktop.


Note: Don't forget to save the computer number by choosing **Save** menu item or pressing the corresponding soft-key. Otherwise your changes won't be saved.



To add the network camera you should enter camera's network address, port, authorization data (login and password) if it is needed. You are also asked about the camera manufacturer and the model (this will speed up camera testing procedure). If you are not sure you may not enter this information.



Before saving the network camera the connection to it must be tested. If the test is passed successfully you will see the new network camera icon  in your camera list. You can view this camera immediately.

If the test result is unsuccessful you will be asked to edit the camera settings. You can also select Save anyway from the menu and the camera with an icon  (not tested) will appear in your camera list. In this case the test will be launched automatically at first connection attempt.

5. Connecting to the camera

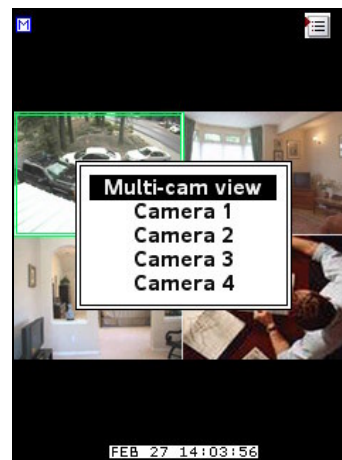
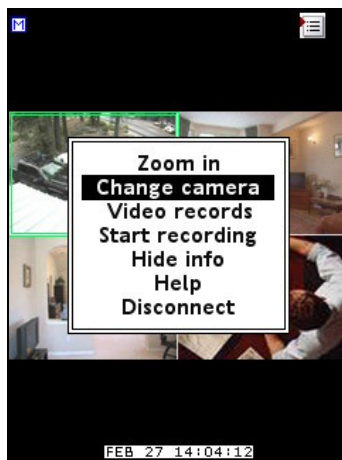
When the client is installed and all data service settings are made completely, try to connect to your camera selecting the menu item **Connect**.



A 'Please wait' screen will be displayed while the client establishes connection to your camera.

1. Viewing live cameras

After the 'Please wait' screen the client starts showing the image from your cameras. To change the camera select the menu item **Change camera** or just point the green frame at the needed camera and press **Trackwheel** or **Select key**. You may also switch from the one-camera view to the multi-camera view by pressing the **# key**.

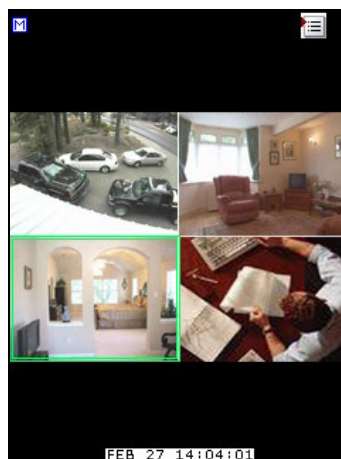
Note: You can view up to four cameras simultaneously if you connect to them over Mobiscope Desktop. Direct concurrent connections to several network cameras are impossible due to device limitations.



In the bottom of your phone screen you may see current date and time. There are a motion detector flag  and a record flag  in the left top corner.

Note: Motion detection and recording features are available for the cameras connected over Mobiscope Desktop only.

When any motion is detected by **Mobiscope Desktop** the motion detector flag becomes red  and the action which you have chosen in **Motion Detector Settings** will be started automatically. When Mobiscope Desktop starts recording, you will see the record flag.

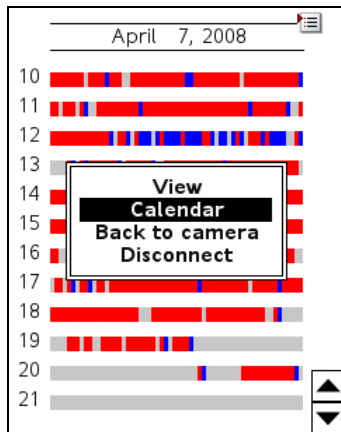


If the screen of your phone is smaller than the picture from the camera you can **Zoom in** and see the more detailed fragment.

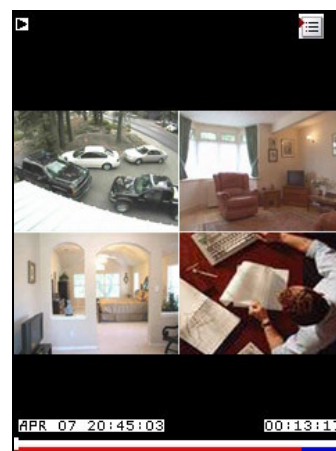
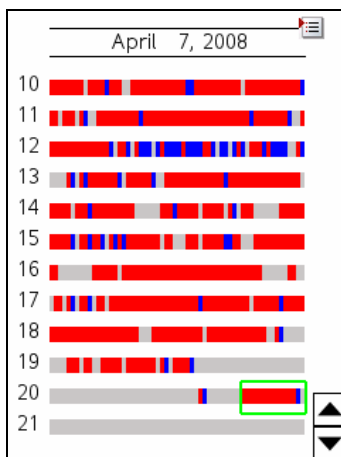
A **Start record** function is also available. You may start recording at any time you want. This function does not depend on whether the motion detector is on or off. You may also watch your video records on the Mobiscope client.

2. Watching recordings


The record list opens on the current date by default. You may choose any other day using a calendar (select **Calendar** menu item).



Red time intervals represent a record period when a motion was detected and the blue ones represent the record period when there was no considerable motion.



To view a record, select it using a trackwheel or 2,4,6,8 keys and select **View** menu item. You may also press the trackwheel to start the video record playback.

If your mobile device has a touchscreen you may select the record by tapping a stylus on it. To start playback tap on the record again. To scroll the records list use two buttons on the right bottom of the screen or press the stylus to the screen and slide vertically. To open the menu, tap a menu icon  with the stylus. You can move this icon on the screen.

The video player in the Mobiscope client has such functions as **Pause**, **Start play**, **Fast forward play x4**, **x16**, **x64** and others.

Note: All hotkeys are available in the Help section.

Appendix A – Downloading Mobiscope Client

Mobiscope Web client

Point any browser to web.mobiscope.com Sign up for Mobiscope Web service and connect to your cameras.

Mobiscope Web service is also available from Apple iPhone and iPod Touch at iphone.mobiscope.com Sing in with your Mobiscope Web account.

Mobiscope Client for Apple iPhone and iPod Touch

1. Go to App Store on your iPhone or iPod Touch and download Mobiscope.
2. Find Mobiscope on iTunes Store and download it to your computer. Then connect your iPhone or iPod Touch to the computer and iTunes will sync applications automatically.

Mobiscope Client for Android device

Point the browser on your mobile to android.mobiscope.com

Sign up for Mobiscope for Android devices online service and connect to your cameras.

Mobiscope Client for BlackBerry handheld

1. Point your BlackBerry browser to bb.mobiscope.com. Scroll down to highlight **Download** and select **Get Link** from the menu. Download the client and reboot your device.
2. If for some reason you can't download the client module directly, download Mobiscope Client (.zip file) from www.mobiscope.com/download to your computer. Unzip the file.

Connect your BlackBerry to the computer. Run BlackBerry Desktop Manager on your computer, choose Application Loader, browse into a folder with mobiscope.alx file, select it and start the file uploading. The icon of Mobiscope application appears on your device.

Mobiscope Client for Java-enabled phone and Symbian OS device

1. You can download the client directly to your mobile device. The WAP download location is: wap.mobiscope.com
2. If for some reason you can't download the client module directly, or error occurs at download, you can download Mobiscope Client (.zip file) from our site www.mobiscope.com/download

Mobiscope Client for Windows Mobile device

1. Download the client from wm.mobiscope.com directly to your mobile device and install it.
2. If for some reason you can't download the client module directly, download Mobiscope Client (.exe file) from www.mobiscope.com/download to your computer. Connect your mobile device to the computer and start the program installation. (You need Microsoft ActiveSync to be installed on your computer.

Mobiscope Client for Palm OS device

1. Download Mobiscope Client (.prc file) from www.mobiscope.com/download on your computer.
2. Connect your mobile device to the computer and install Mobiscope using Palm Desktop or the other application for transferring files to Palm.

Support

You can find more information about Mobiscope on our site: www.mobiscope.com

Support form for further assistance: www.mobiscope.com/support