



Mobiscope

Video from webcams on mobile – for home surveillance or just for fun!

For Palm OS devices

Getting Started Guide

Mobiscope software consists of two components: the desktop part and the client module.

- The desktop part (Mobiscope Desktop) should be installed on your computer.
- The client module should be installed on your handheld.

To work with your web and network cameras on your computer through the mobile device, you should install both these components.

1. Installing Mobiscope Client on a handheld

To install Mobiscope on your handheld or smartphone with Palm OS you should do the following:

Download Mobiscope Client file **mobiscope.prc** on your desktop computer from www.mobiscope.com/download

Connect your mobile device to your desktop computer and install Mobiscope. Palm Desktop (or the other application for transferring files to Palm) must be installed on your computer.

2. Starting the client

Before you can connect to your cameras through the mobile phone, you should configure access to the Internet for third-party applications. As a rule, you should make right settings for access point name (APN) in data service settings on the mobile phone.

Most mobile networks offer two different APNs: one for full Internet connection and another that is a more limited set, is often used for WAP only. You should configure APN for full Internet access. Internet APN is used by third-party applications which needs direct Internet access (such as various messengers, web browsers, email clients, etc.) or when you use mobile phone as a modem to access the Internet from your computer.

You can get to know specific Internet APN settings for your mobile phone from support service of your mobile network operator. We recommend you precise the following: which tariff plan is optimal for using third-party applications, and which settings are proper for working with full Internet access through TCP/IP connection. If it is problematic to connect via TCP/IP connection type, please select HTTP connection type in Setup section.

3. Registration and trial

After the first launch of Mobiscope you will be asked to insert the license code, which you have received with the purchase of the program. Please, insert the license code into corresponding field and click **Register** button.

If you want to use Mobiscope in trial mode, click **Try** button.

Mobiscope Registration

Please enter your license code.
If you don't have a code yet,
select "Try" or you may purchase
it from site www.mobiscope.com.

License code:
1234567890abcde

Register Try

4. Connecting to your cameras

At first start the address book contains only an address of a demo computer with cameras.

Your Mobiscope computer number is not added into the client's address book by default.

You should click **New** button to add a new record into the address book. In the new address dialog you should enter the Mobiscope computer number which you received at the registration while installing the desktop part. Then you need to enter your password which you specified in the Mobiscope Desktop.

New Camera

Computer number: 20000602

Password: *****

Description:

Show password

Save password

Autoconnect

Save Cancel

Camera list

10-000-001 (n/p)
20000602

Connect New Setup



Note: After changing any parameter in Setup menu, don't forget to save your new settings by clicking a **Save** button. Otherwise your changes won't be saved.


When the client is installed and all data service settings are made completely, try to connect to your cameras clicking **Connect** button. After successful connection to the desktop, the client will display the 'Please wait' screen while establishing connection to your cameras.

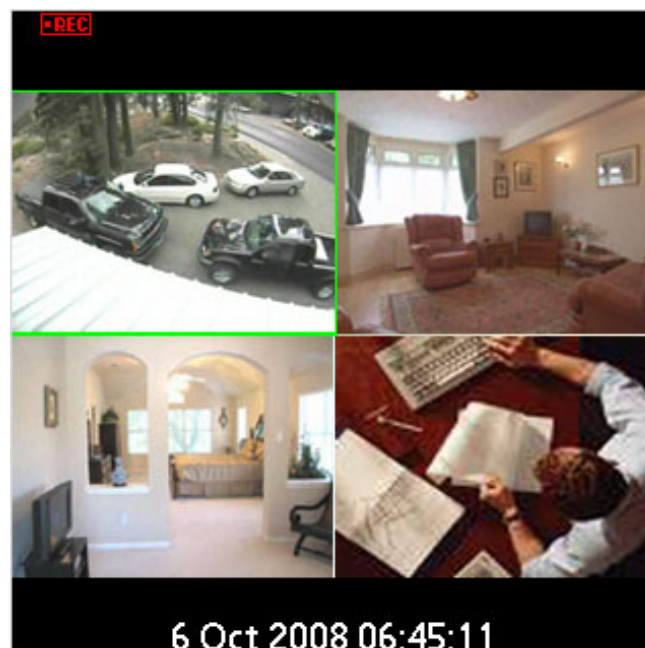
5. Working with Mobiscope client

After the 'Please wait' screen the client starts showing the image from your cameras. To change the camera select the menu item **Change camera** or just point the green frame at the needed camera and press **Select key**. You may also switch from the one-camera view to the multi-camera view by clicking on the screen with a stylus.



In the bottom of your phone screen you may see current date and time. There are a motion detector flag  and a record flag  in the left top corner.

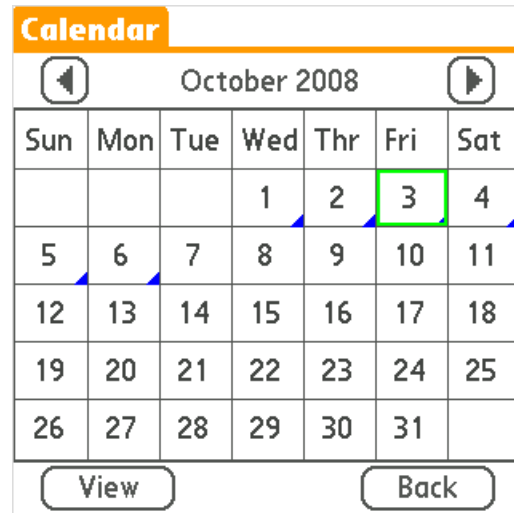
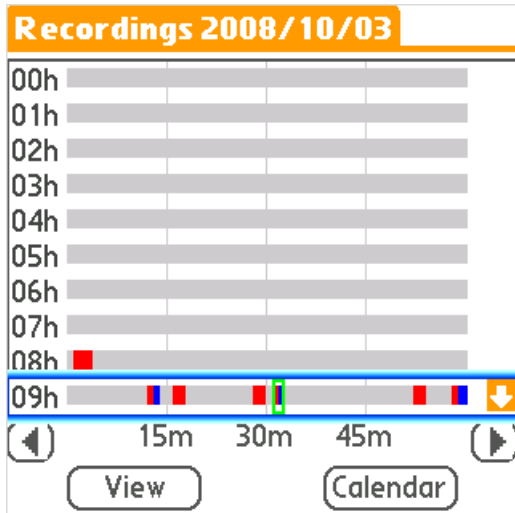
When any motion is detected by **Mobiscope Desktop** the motion detector flag becomes red  and the action which you have chosen in **Motion Detector Settings** will be started automatically. When Mobiscope Desktop starts recording, you will see the the record flag.



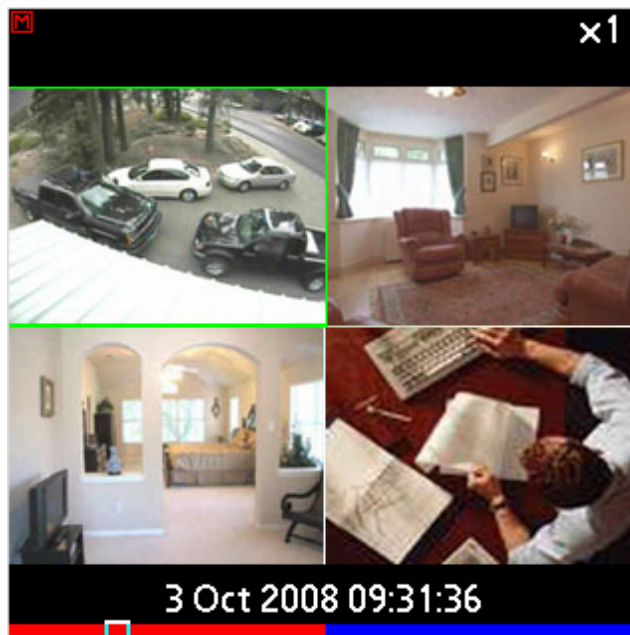
If the screen of your phone is smaller than the picture from the camera you can **Zoom in** and see the more detailed fragment.

A **Start record** function is also available. You may start recording at any time you want. This function does not depend on whether the motion detector is on or off. You may also watch your video records on the Mobiscope client.

The record list opens on the current date by default. You may choose any other day using a calendar (click **Calendar** button).



Red time intervals represent a record period when a motion was detected and the blue ones represent the record period when there was no considerable motion. To view a record, select it using a stylus and click **View** button.



To scroll the records list use two buttons on the right bottom of the screen. You can speed up the playback from the menu by choosing **Playback speed >>2**.

Appendix A – Downloading Mobiscope Client

Mobiscope Web client

Point any browser to web.mobiscope.com Sign up for Mobiscope Web service and connect to your cameras.

Mobiscope Web service is also available from Apple iPhone and iPod Touch at iphone.mobiscope.com Sing in with your Mobiscope Web account.

Mobiscope Client for Apple iPhone and iPod Touch

1. Go to App Store on your iPhone or iPod Touch and download Mobiscope.
2. Find Mobiscope on iTunes Store and download it to your computer. Then connect your iPhone or iPod Touch to the computer and iTunes will sync applications automatically.

Mobiscope Client for Android device

Point the browser on your mobile to android.mobiscope.com

Sign up for Mobiscope for Android devices online service and connect to your cameras.

Mobiscope Client for BlackBerry handheld

1. Point your BlackBerry browser to bb.mobiscope.com. Scroll down to highlight **Download** and select **Get Link** from the menu. Download the client and reboot your device.
2. If for some reason you can't download the client module directly, download Mobiscope Client (.zip file) from www.mobiscope.com/download to your computer. Unzip the file.

Connect your BlackBerry to the computer. Run BlackBerry Desktop Manager on your computer, choose Application Loader, browse into a folder with mobiscope.alx file, select it and start the file uploading. The icon of Mobiscope application appears on your device.

Mobiscope Client for Java-enabled phone and Symbian OS device

1. You can download the client directly to your mobile device. The WAP download location is: wap.mobiscope.com
2. If for some reason you can't download the client module directly, or error occurs at download, you can download Mobiscope Client (.zip file) from our site www.mobiscope.com/download

Mobiscope Client for Windows Mobile device

1. Download the client from wm.mobiscope.com directly to your mobile device and install it.
2. If for some reason you can't download the client module directly, download Mobiscope Client (.exe file) from www.mobiscope.com/download to your computer. Connect your mobile device to the computer and start the program installation. (You need Microsoft ActiveSync to be installed on your computer.

Mobiscope Client for Palm OS device

1. Download Mobiscope Client (.prc file) from www.mobiscope.com/download on your computer.
2. Connect your mobile device to the computer and install Mobiscope using Palm Desktop or the other application for transferring files to Palm.

Support

You can find more information about Mobiscope on our site: www.mobiscope.com

Support form for further assistance: www.mobiscope.com/support