



Mobiscope

Video from webcams on mobile

For Windows Mobile devices

Getting Started Guide

You can start viewing your network (IP) cameras right after Mobiscope Client installation on your mobile device. If you install Mobiscope Desktop on your computer you will also get additional functionality.

Learn how to view your network cameras in the "Camera list" section.

The following Mobiscope features will become available after Mobiscope Desktop installation:

- Viewing up to 4 network and USB-cameras connected to the computer;
- Motion detection and e-mail alerts;
- Recording triggered by motion and a schedule.

1. Installing Mobiscope Client on a handheld

To install Mobiscope on your handheld or smartphone you should do the following:

Download Mobiscope Client file from **wm.mobiscope.com** right onto your mobile device and install it.

If you experience some difficulties try the following way:

1. Download Mobiscope Client .exe file from www.mobiscope.com/download to your computer.
2. Connect your mobile device to the computer and start the program installation. (You need Microsoft ActiveSync to be installed on your computer.)

2. Starting the client

Before you can connect to your cameras through the mobile phone, you should configure access to the Internet for third-party applications. As a rule, you should make right settings for access point name (APN) in data service settings on the mobile phone.

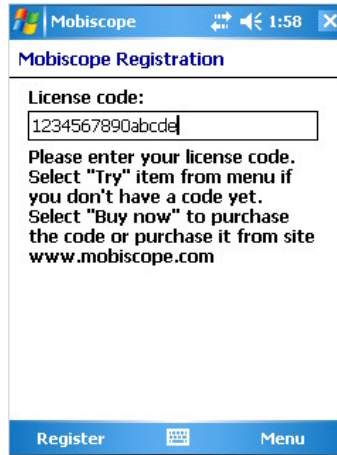
Most mobile networks offer two different APNs: one for full Internet connection and another that is a more limited set, is often used for WAP only. You should configure APN for full Internet access. Internet APN is used by third-party applications which needs direct Internet access (such as various messengers, web browsers, email clients, etc.) or when you use mobile phone as a modem to access the Internet from your computer.

You can get to know specific Internet APN settings for your mobile phone from support service of your mobile network operator. We recommend you precise the following: which tariff plan is optimal for using third-party applications, and which settings are proper for working with full Internet access through TCP/IP connection. If it is problematic to connect via TCP/IP connection type, please select HTTP connection type in Setup section.

3. Registration and trial

After the first launch of Mobiscope you will be asked to insert the license code, which you have received with the purchase of the program. Please, insert the license code into corresponding field and click **Register** button.

If you want to use Mobiscope in trial mode, click **Try** button.

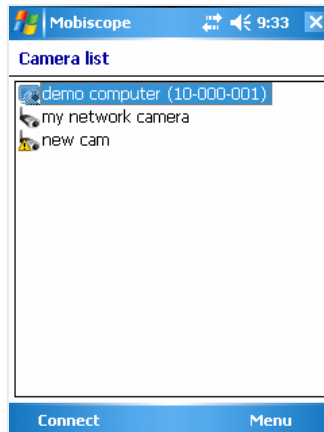


4. Camera list

At first start the camera list contains only a demo computer with cameras.

Your Mobiscope computer number is not added into the client's camera list by default.

You can add the number (Mobiscope computer number) of your computer with cameras connected to it to the camera list. USB cameras and network cameras can be managed by Mobiscope Desktop.

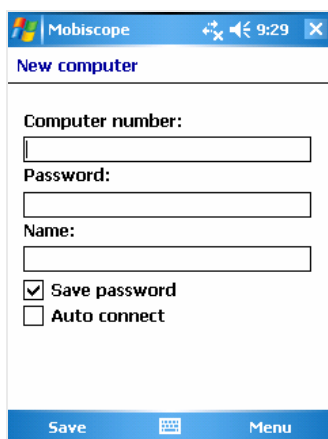


You can also add network cameras (public or your own) and view them directly without connecting to Mobiscope Desktop. In this case motion detection and recording features are not available.

To add a new camera to your camera list you should select the menu item **New camera**.

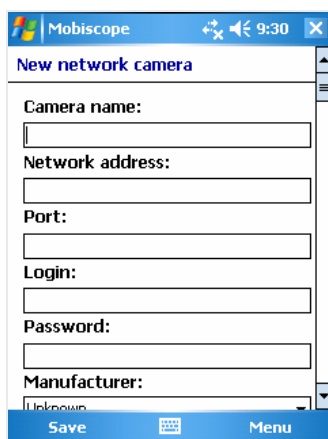
At the first step of the New camera wizard you should select what you would like to add – a computer number or a network camera.


If you add a computer number you should enter the number of the computer which you received at registration of Mobiscope service while installing the desktop part. Then you need to enter your password which you specified in the Mobiscope Desktop.




Note: After changing any parameter in Setup menu, don't forget to save your new settings by clicking a **Save** button.

To add the network camera you should enter camera's network address, port, authorization data (login and password) if it is needed. You are also asked about the camera manufacturer and the model (this will speed up camera testing procedure). If you are not sure you may not enter this information.



Before saving the network camera the connection to it must be tested. If the test is passed successfully you will see the new network camera icon  in your camera list. You can view this camera immediately.

If the test failed you are recommended to edit the camera settings. You can also save it anyway and the camera with an icon  (not tested) will appear in your camera list. In this case the test will be launched automatically at first connection attempt.

5. Connecting to the camera

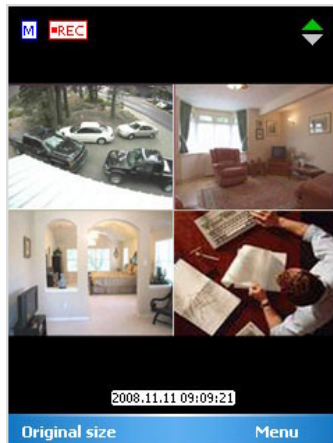
When the client is installed and the camera is added to your camera list, try to connect to your camera selecting the menu item **Connect**.

A 'Please wait' screen will be displayed while the client establishes connection to your camera.

1. Viewing live cameras

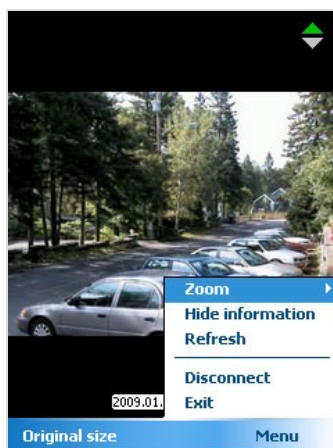
After the 'Please wait' screen the client starts showing the image from your cameras. To change the camera select the menu item **Change camera**. You may also switch from the one-camera view to the multi-camera view by clicking on the screen with a stylus. The first tap selects the camera with a green frame and after the second tap the selected camera is shown.

Note: You can view up to four cameras simultaneously if you connect to them over Mobiscope Desktop. Direct concurrent connections to several network cameras are impossible due to device limitations.



In the bottom of your phone screen you may see current date and time. There are a motion detector flag **M** and a record flag **REC** in the left top corner.

When any motion is detected by **Mobiscope Desktop** the motion detector flag becomes red **M** and the action which you have chosen in **Motion Detector Settings** will be started automatically. When Mobiscope Desktop starts recording, you will see the record flag.



You can keep track of the camera image refresh with the help of an indicator located in the right top corner. If the refresh rate of the camera is slow you can refresh the camera image manually. For that select **Refresh** from the menu.

A **Start record** function is also available. You may start recording at any time you want. This function does not depend on whether the motion detector is on or off.

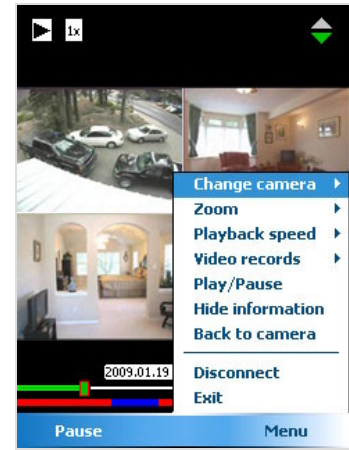
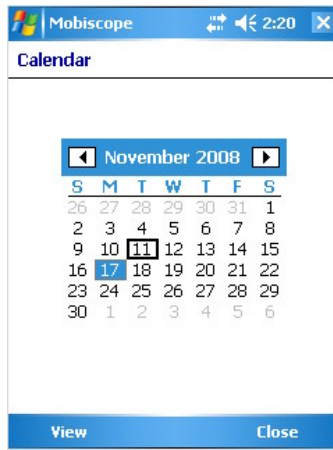
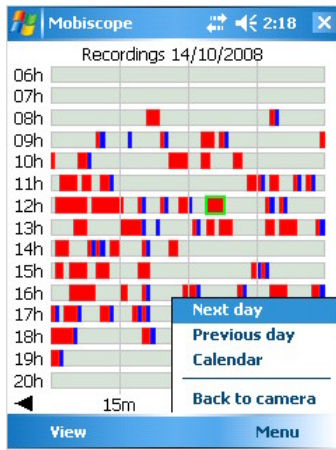
Note: Motion detection and recording features are available for the cameras connected over Mobiscope Desktop only.

If the screen of your phone is smaller than the picture from the camera you can **Zoom in** and see the more detailed fragment.

2. Watching recordings

You may also watch your video recordings on the Mobiscope client.

The record list opens on the current date by default. You may choose any other day using a calendar (select **Calendar** from the menu).



In the hourly recording list red time intervals represent a record period when a motion was detected and the blue ones represent the record period when there was no considerable motion. To view a record, select it using a stylus and click **View** button. The other way to start viewing the selected recording is to tap on the recording with a stylus again.

The video player in the Mobiscope client has such functions as **Pause**, **Start play**, **Fast forward play x4, x16, x64** and others.

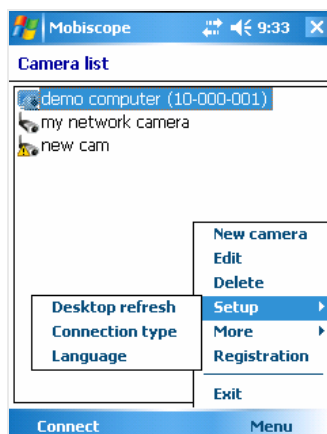
These hotkeys are available on smartphones.

- 1 – Scroll back
- 2 – Play/Pause video
- 3 – Scroll forward
- 4 – Fast back play x4, x16, x64
- 5, [Softkey] – Menu
- 6 – Fast forward play x4, x16, x64
- 7 – Previous video recording
- 8 – Zoom in/Zoom out
- 9 – Next video recording
- * - Show/Hide info
- # – Select camera/Multi-camera view

3. Setup

Select **Setup** from the menu to change preferences of Mobiscope Client. You can change Desktop camera refresh, Connection type, Interface language.

Desktop camera refresh preference defines how often Mobiscope Client requests camera image from Mobiscope Desktop. If the Internet connection is slow the refresh speed may not correspond with the selected value.



Appendix A – Downloading Mobiscope Client

Mobiscope Web client

Point any browser to web.mobiscope.com Sign up for Mobiscope Web service and connect to your cameras.

Mobiscope Web service is also available from Apple iPhone and iPod Touch at iphone.mobiscope.com Sing in with your Mobiscope Web account.

Mobiscope Client for Apple iPhone and iPod Touch

1. Go to App Store on your iPhone or iPod Touch and download Mobiscope.
2. Find Mobiscope on iTunes Store and download it to your computer. Then connect your iPhone or iPod Touch to the computer and iTunes will sync applications automatically.

Mobiscope Client for Android device

Point the browser on your mobile to android.mobiscope.com

Sign up for Mobiscope for Android devices online service and connect to your cameras.

Mobiscope Client for BlackBerry handheld

1. Point your BlackBerry browser to bb.mobiscope.com. Scroll down to highlight **Download** and select **Get Link** from the menu. Download the client and reboot your device.
2. If for some reason you can't download the client module directly, download Mobiscope Client (.zip file) from www.mobiscope.com/download to your computer. Unzip the file.

Connect your BlackBerry to the computer. Run BlackBerry Desktop Manager on your computer, choose Application Loader, browse into a folder with mobiscope.alx file, select it and start the file uploading. The icon of Mobiscope application appears on your device.

Mobiscope Client for Java-enabled phone and Symbian OS device

1. You can download the client directly to your mobile device. The WAP download location is: wap.mobiscope.com
2. If for some reason you can't download the client module directly, or error occurs at download, you can download Mobiscope Client (.zip file) from our site www.mobiscope.com/download

Mobiscope Client for Windows Mobile device

1. Download the client from wm.mobiscope.com directly to your mobile device and install it.
2. If for some reason you can't download the client module directly, download Mobiscope Client (.exe file) from www.mobiscope.com/download to your computer. Connect your mobile device to the computer and start the program installation. (You need Microsoft ActiveSync to be installed on your computer.

Mobiscope Client for Palm OS device

1. Download Mobiscope Client (.prc file) from www.mobiscope.com/download on your computer.
2. Connect your mobile device to the computer and install Mobiscope using Palm Desktop or the other application for transferring files to Palm.

Support

You can find more information about Mobiscope on our site: www.mobiscope.com

Support form for further assistance: www.mobiscope.com/support